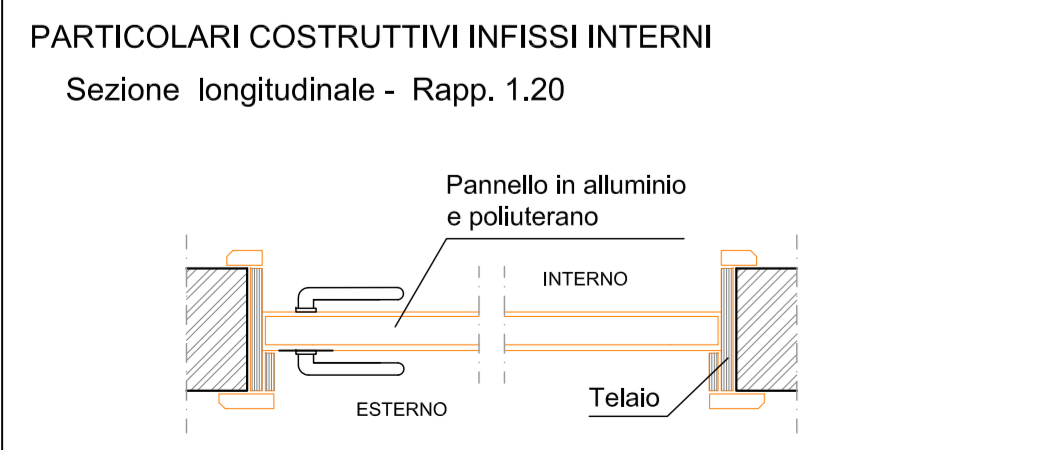
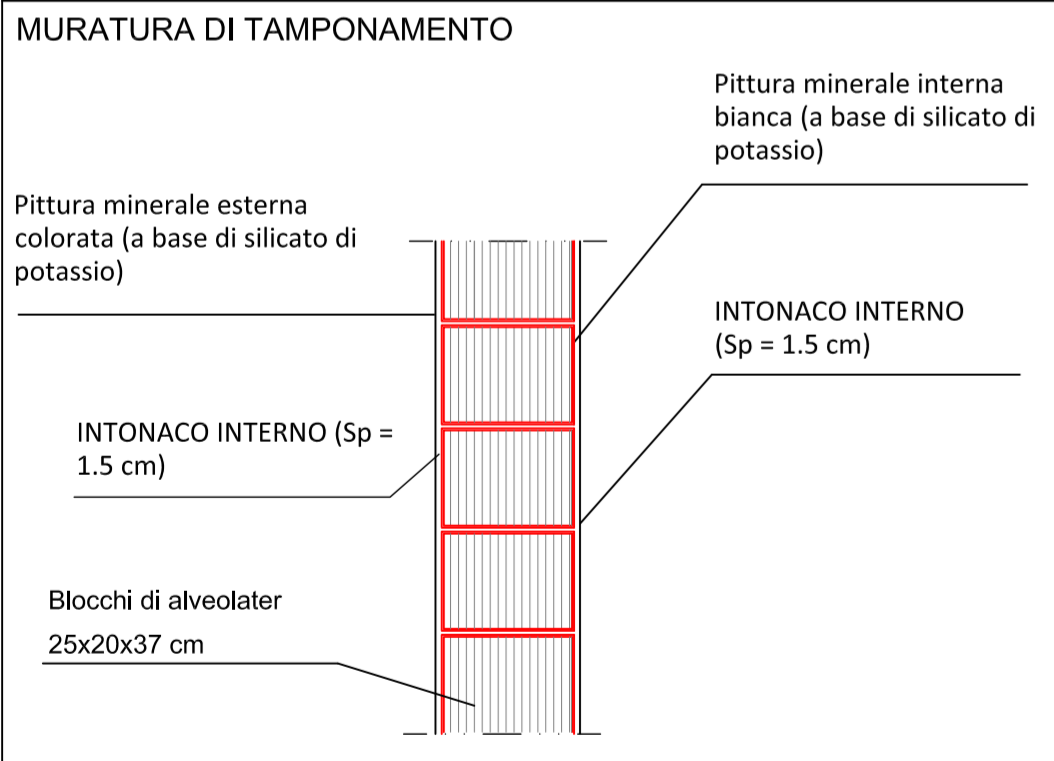
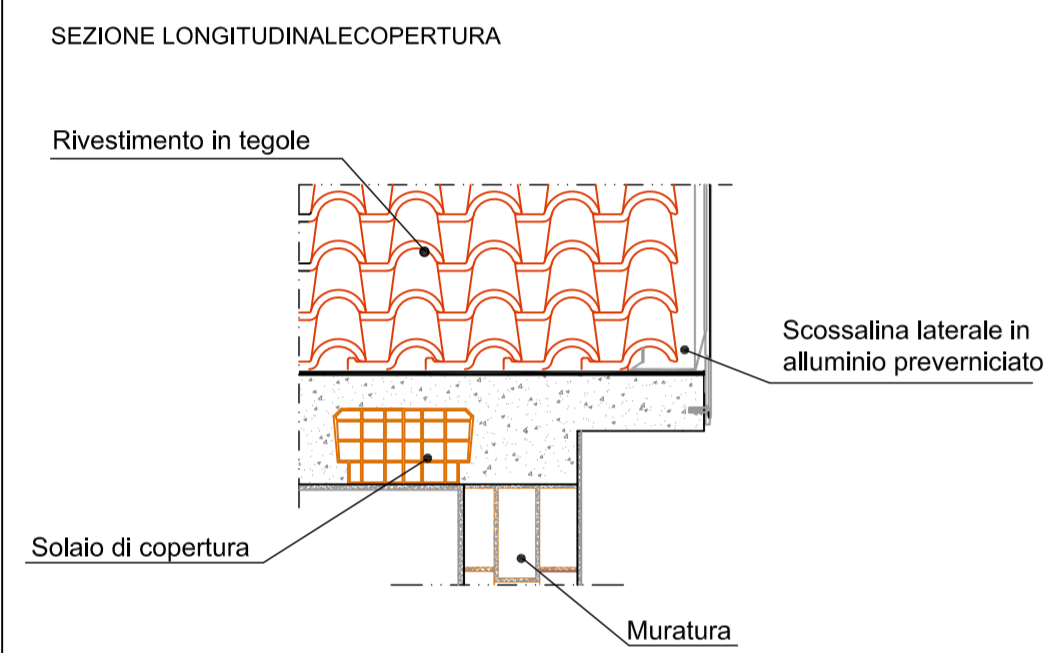
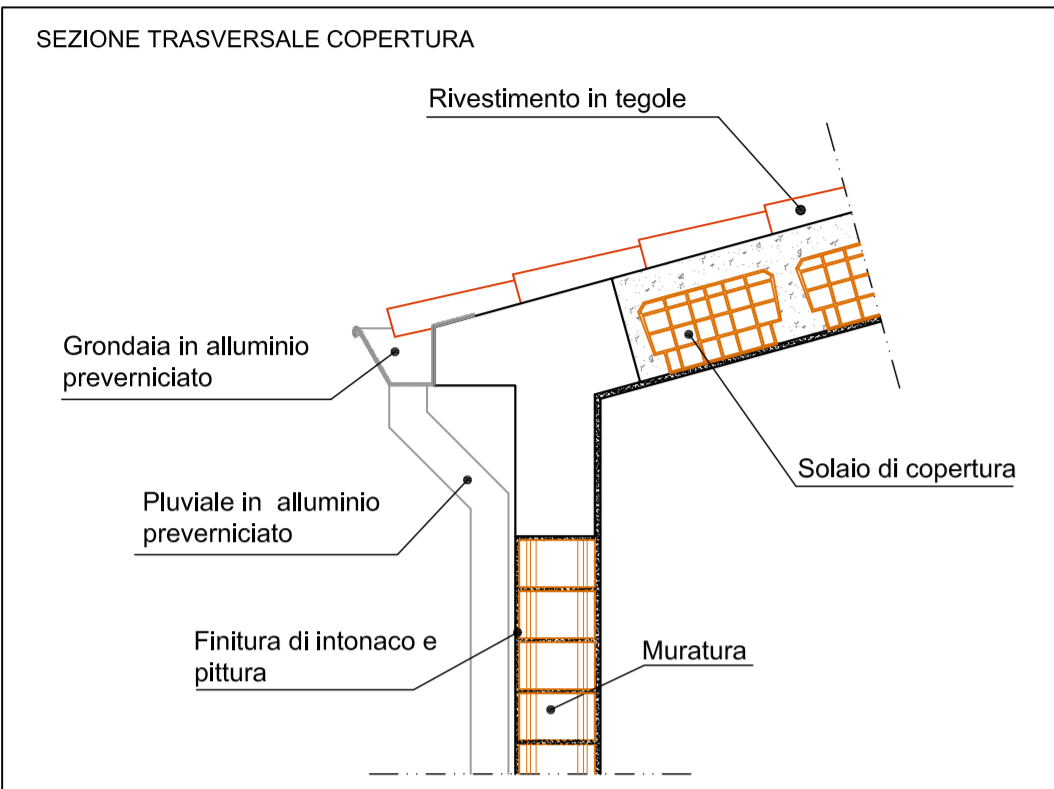
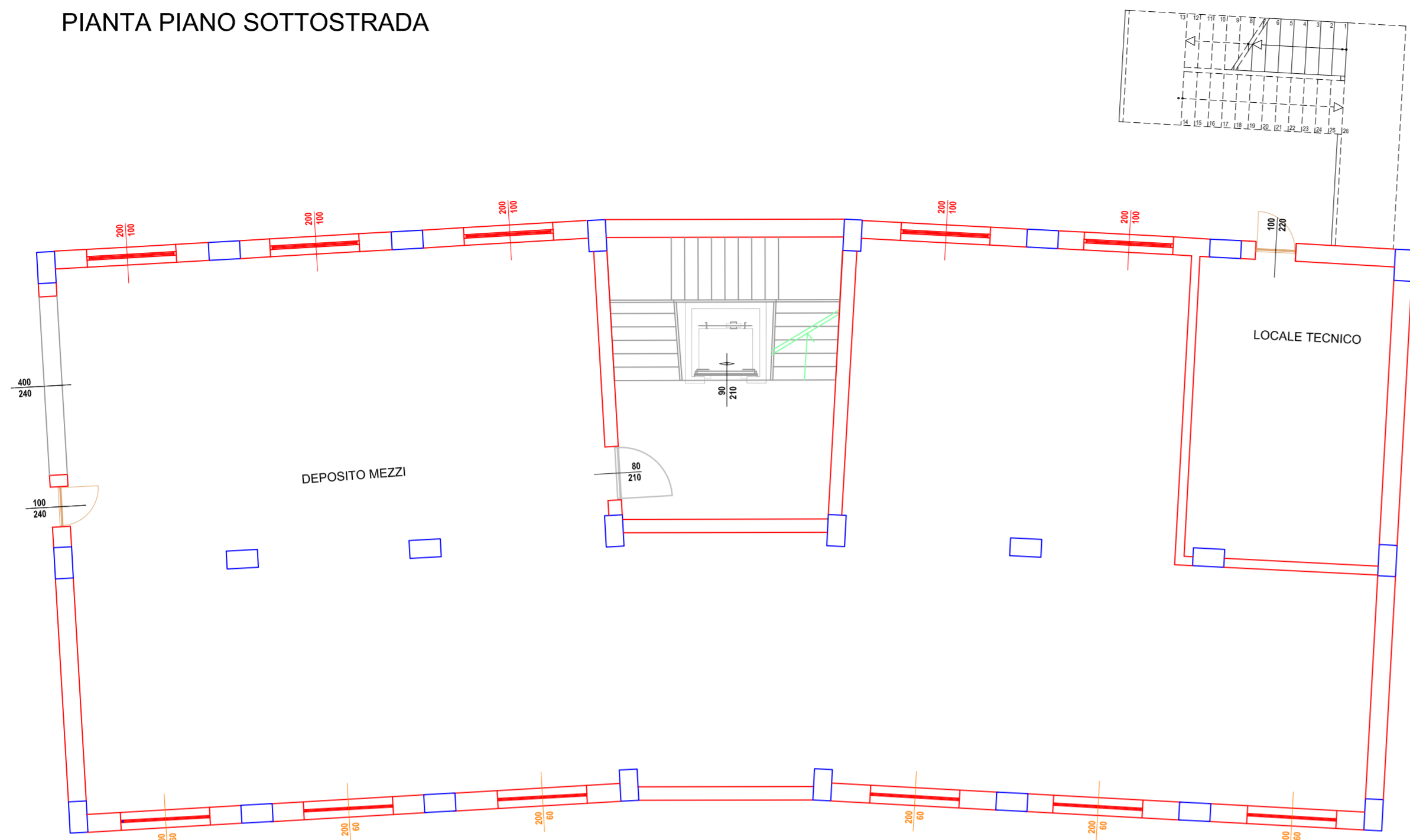


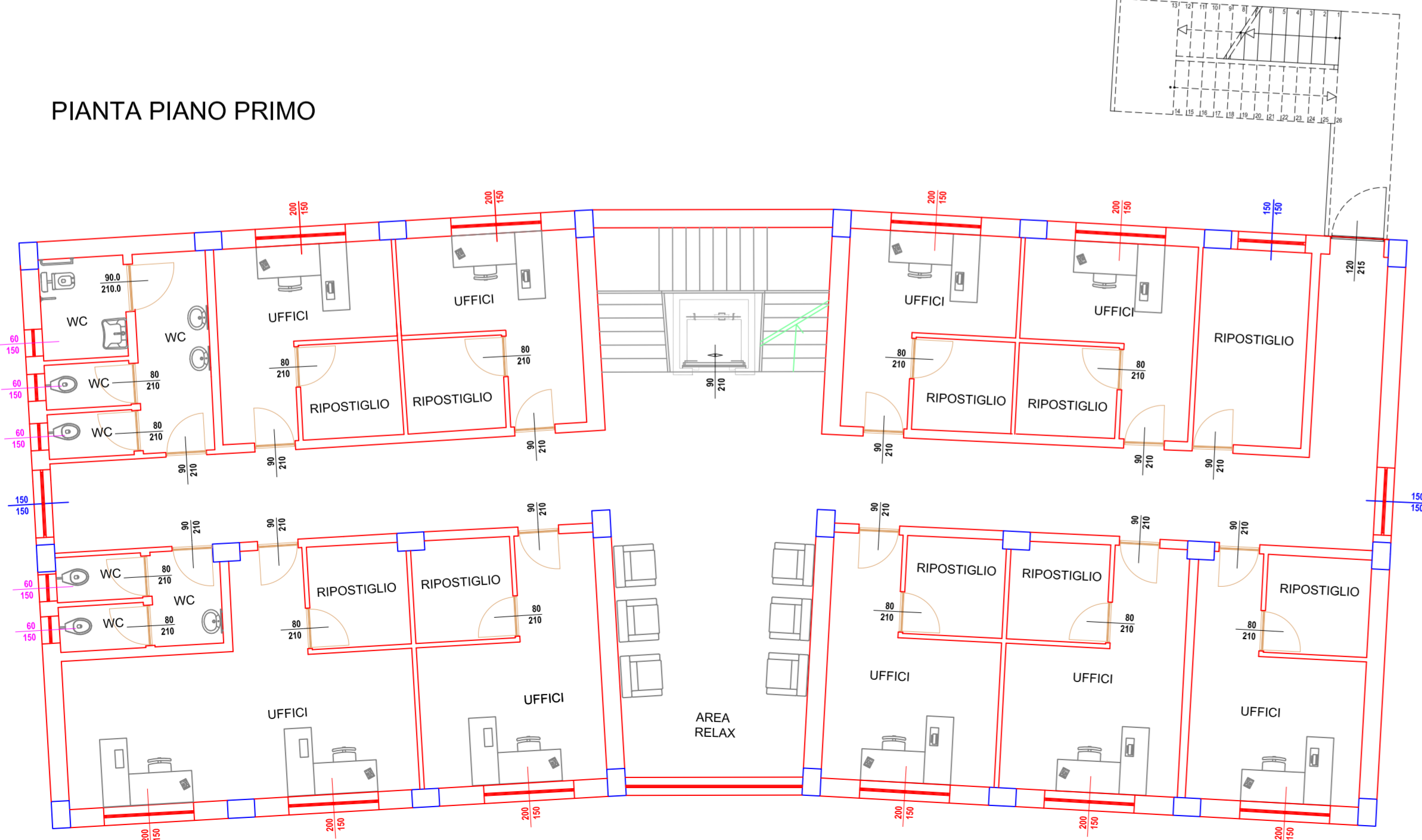
**PARTICOLARI SCALA 1:20**



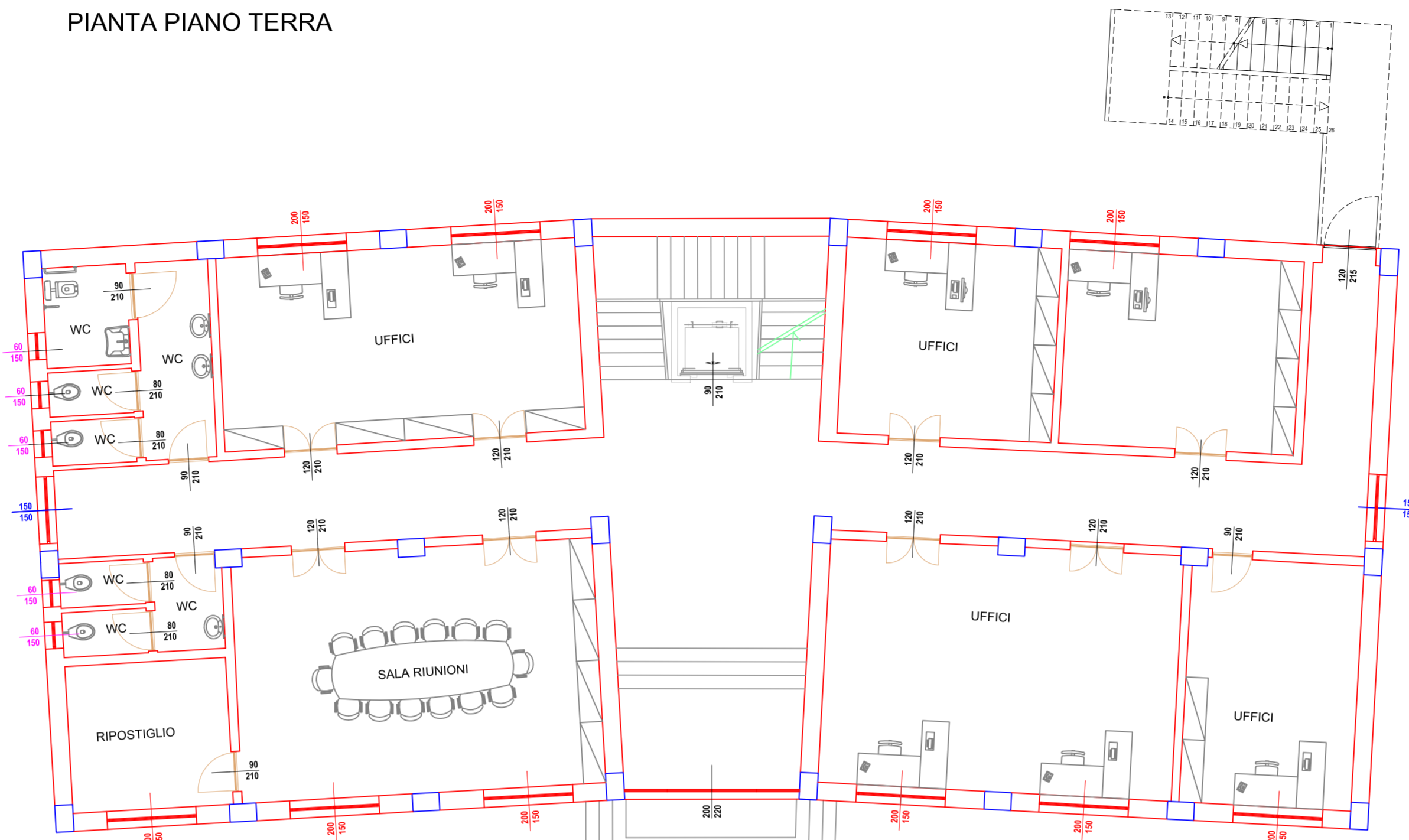
**PIANTA PIANO SOTTOSTRADA**



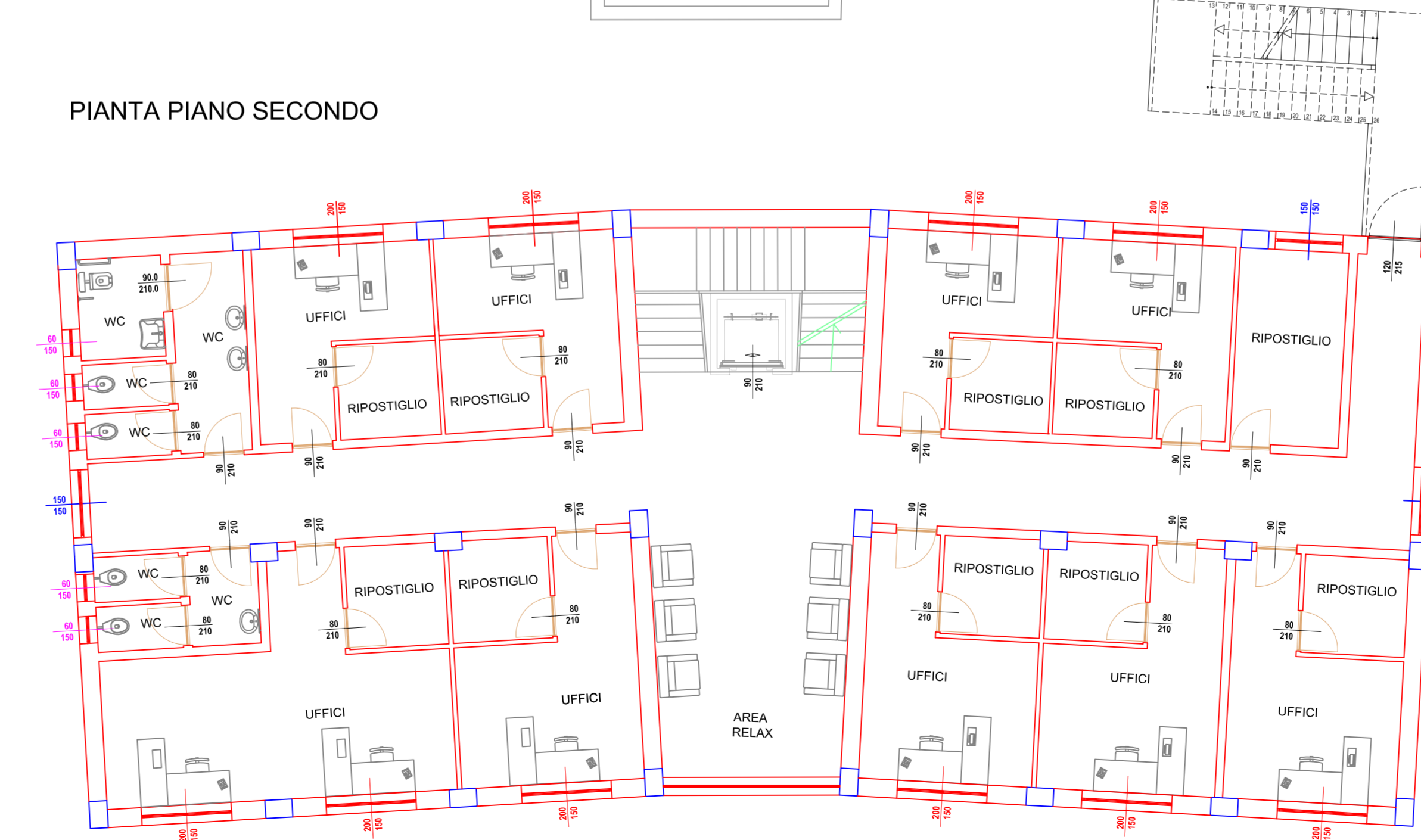
**PIANTA PIANO PRIMO**



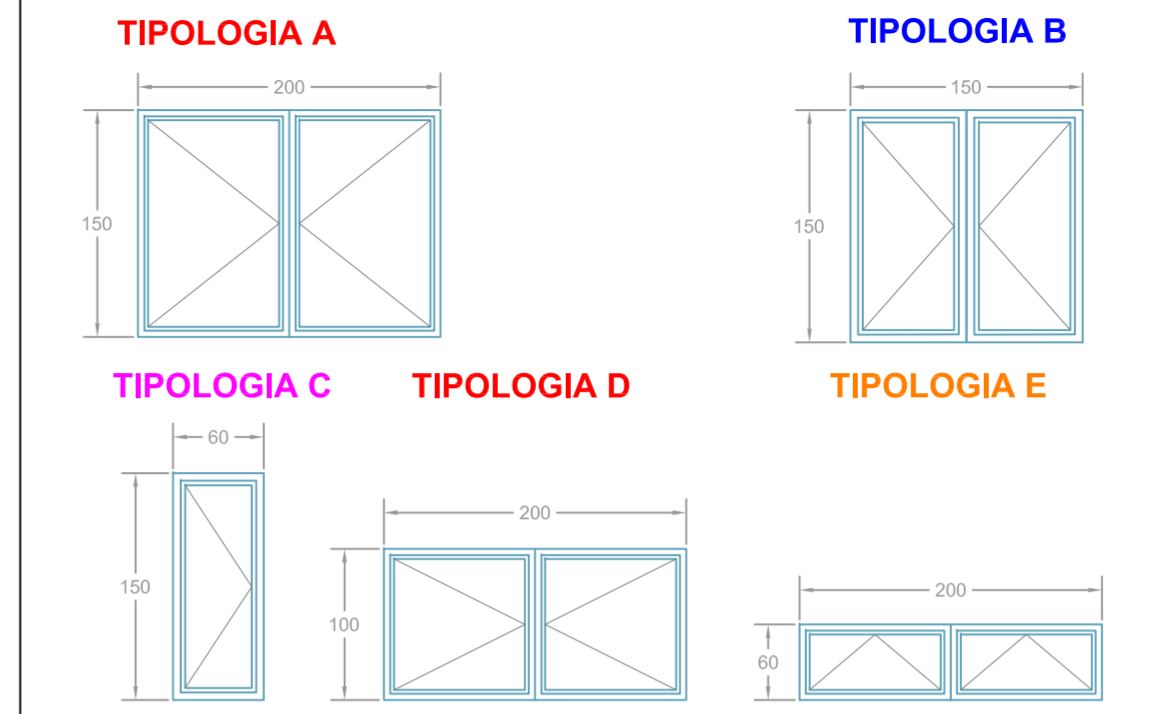
**PIANTA PIANO TERRA**



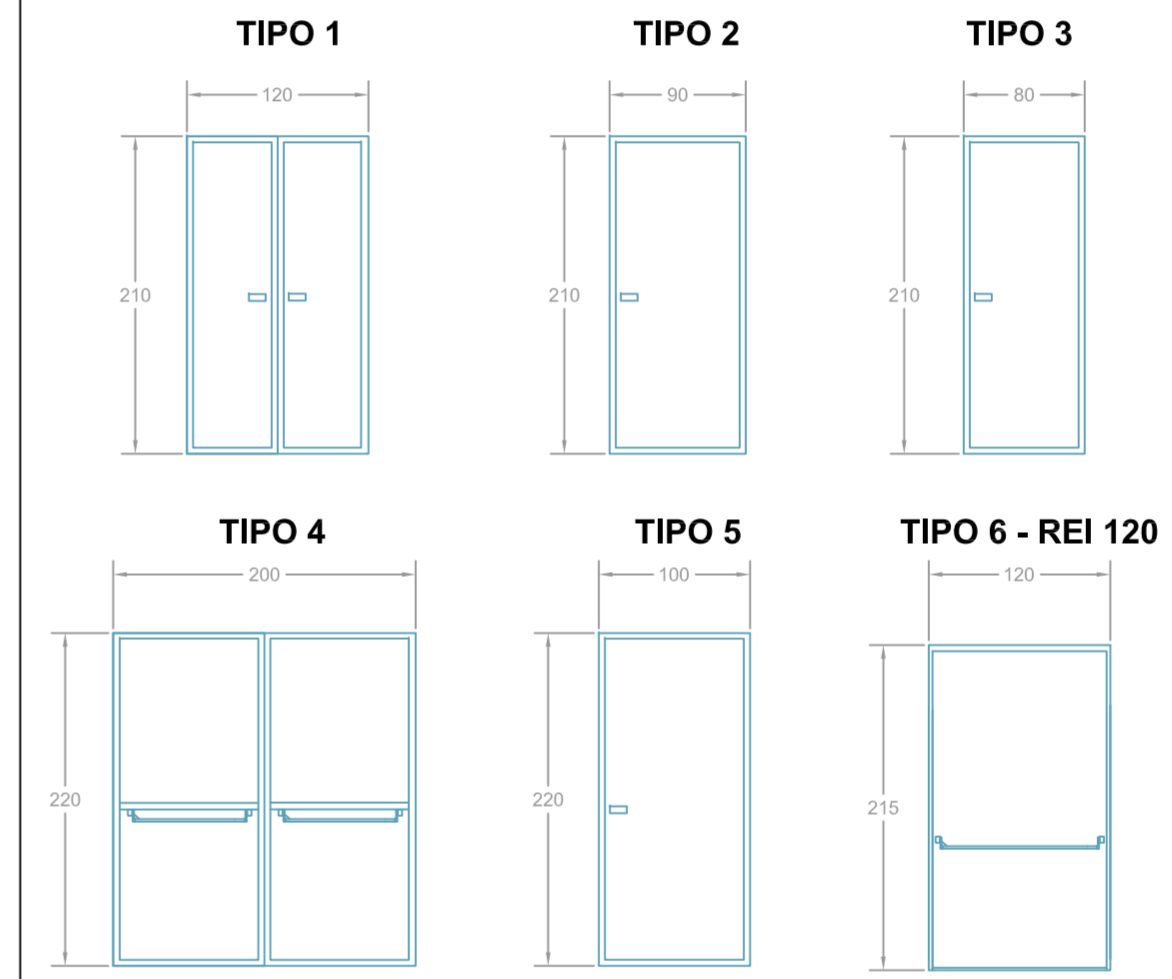
**PIANTA PIANO SECONDO**



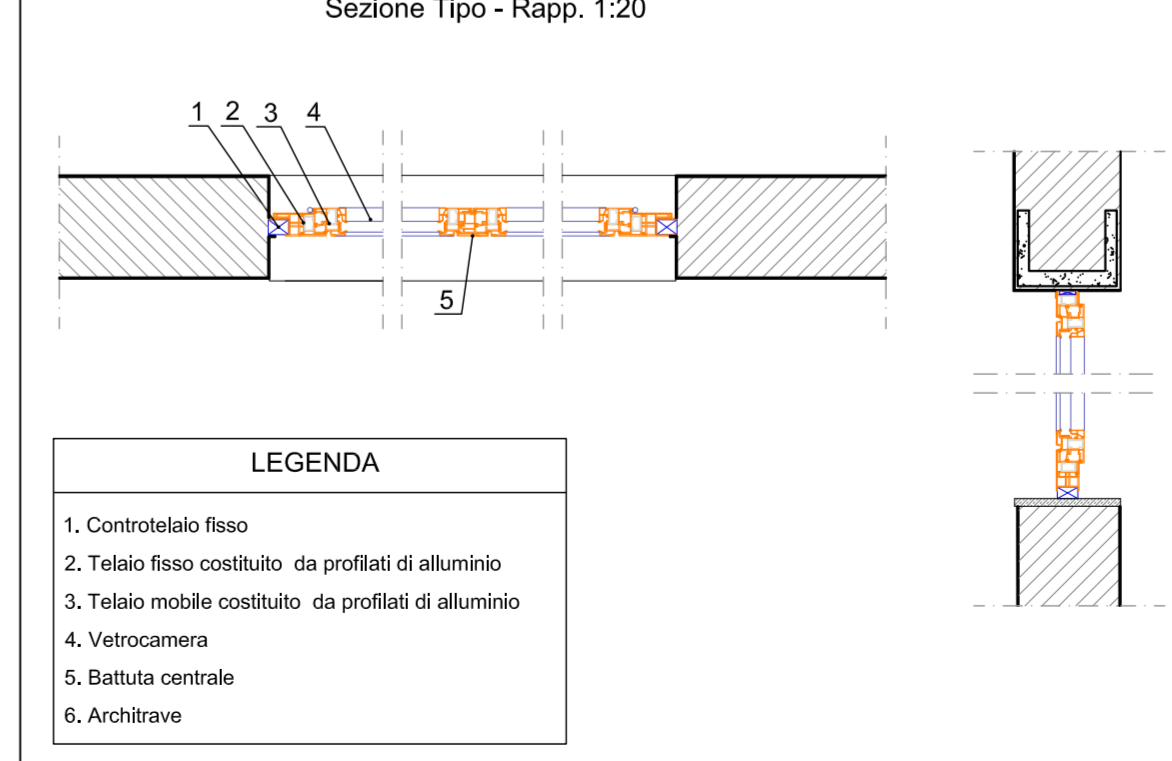
**ABACO DEGLI INFISSI ESTERNI**



**ABACO PORTE INTERNE ED ESTERNE**



**PARTICOLARI COSTRUTTIVI INFISSI ESTERNI**  
Sezione Tipo - Rapp. 1:20



**COMUNE CASTEL BARONIA**  
(PROVINCIA DI AVELLINO)

OGGETTO: **FONDO PER LA PREVENZIONE DEL RISCHIO SISMICO**

Legge 24/06/2009 n. 77 - Ordinanze di Protezione Civile 4007/12 e 52/13 - D.G.R. n°118 del 27/05/2013 - D.G.R. n°814 del 23/12/2015 - D.G.R. n. 482 del 31/8/2016 -

**LAVORI DI DEMOLIZIONE E RICOSTRUZIONE EDIFICIO EX PRETURA IN PIAZZA DANTE DA DESTINARE A COC**

**TAVOLA:**  
**AR - 3**

**SCALA:**  
**VARIE**

**ELABORATI GRAFICI STATO DI PROGETTO:**  
**- ABACO DEGLI INFISSI**

IL R.U.P. :  
Geom. Nicola Saracino



IL PROGETTISTA:  
Arch. Francesco Iacoviello



CASTEL BARONIA, Dicembre 2016